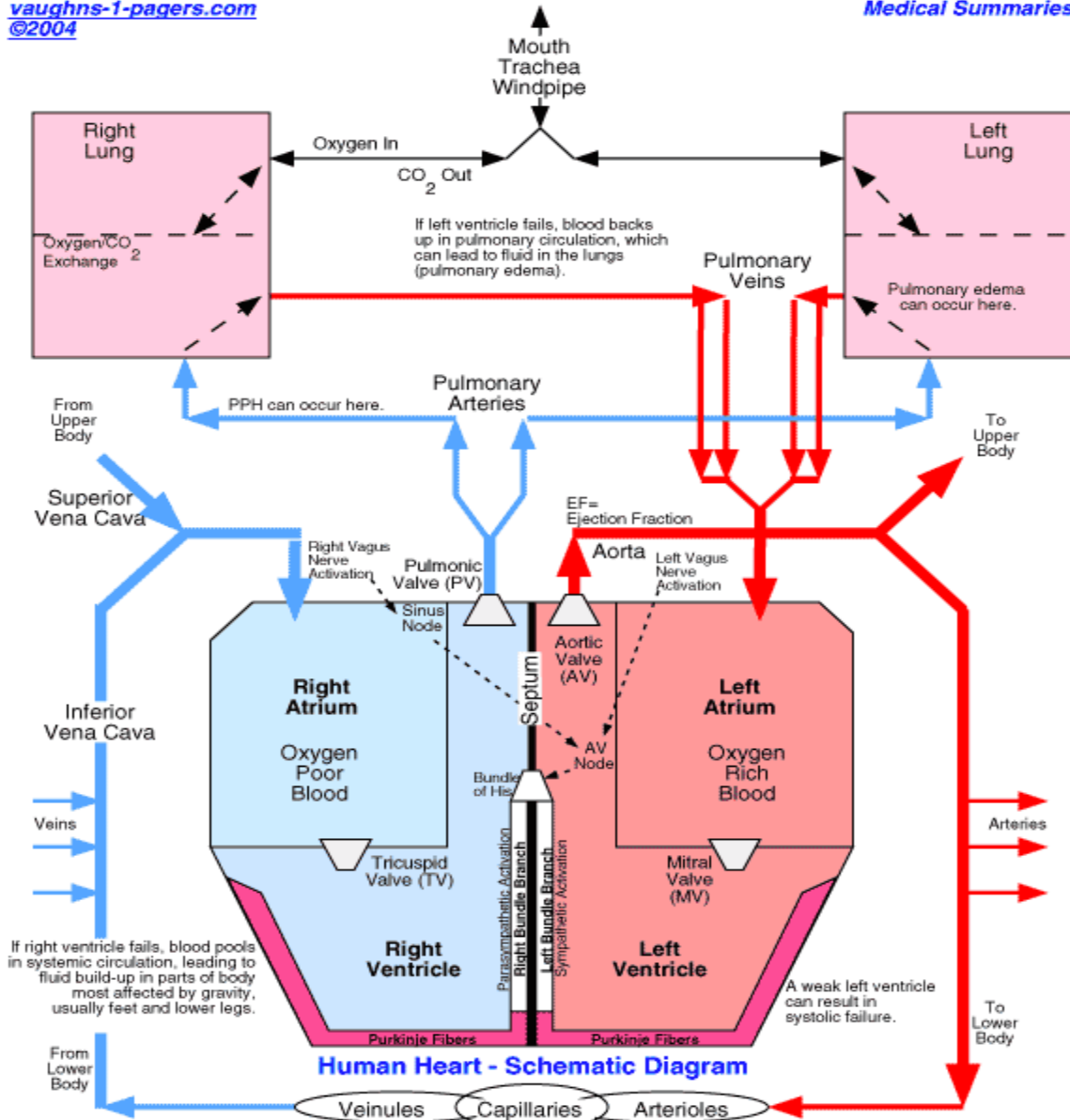


HUMAN HEART DIAGRAM

vaughns-1-pagers.com
 ©2004

Medical Summaries



The tricuspid and mitral valves open and close simultaneously - the pulmonic and aortic valves close and open simultaneously.
 Systole (contraction) = When the TV and MV are closed, and the PV and AV are open.
 Diastole (relaxation) = When the TV and MV are open, and the PV and AV are closed.

Fname: heart-diagram3.jpg